

# MONTHLY MEMBERSHIP PROGRESS REPORT

District 23 A

Results as of: 5/31/2020

GMT:

LOCATION CONNECTICUT

GMT CA

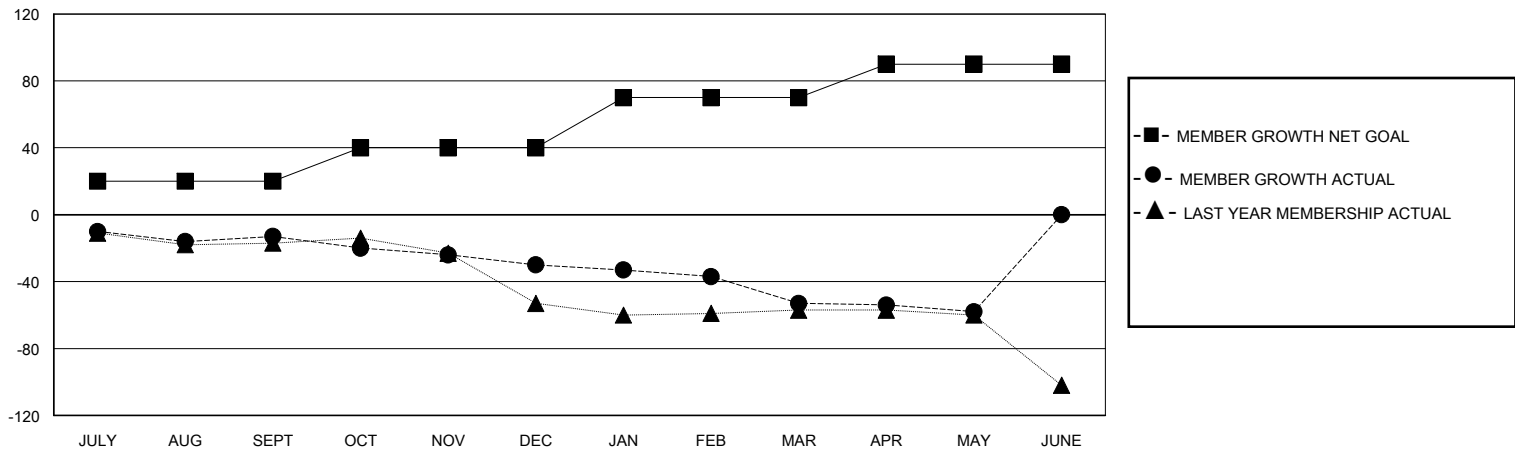
Clubs			
RESULTS FOR 2019-2020			
QUARTER	NEW CLUB GOAL	NEW CLUBS	DROPPED CLUBS
JULY/AUG/SEPT	0	0	1
OCT/NOV/DEC	0	0	0
JAN/FEB/MAR	1	0	0
APR/MAY/JUNE	0	0	1

Members			
RESULTS FOR 2019-2020			
QUARTER	MEMBER GROWTH NET GOAL	MEMBER GROWTH ACTUAL	DROPPED MEMBERS ACTUAL (including transfers)
JULY/AUG/SEPT	20	16	27
OCT/NOV/DEC	20	16	33
JAN/FEB/MAR	30	19	40
APR/MAY/JUNE	20	7	9

GOALS AND ACTUAL NEW CLUBS CUMULATIVE



GOALS AND ACTUAL MEMBERS CUMULATIVE



<b>DROPPED CLUBS: 2</b>	23 CLUBS OF 50 ADDED 1 OR MORE NEW MEMBERS	<b>GENDER DISTRIBUTION</b>	
		MALE 877 (66.54%)	FEMALE 441 (33.46%)
<b>DROPPED MEMBERS</b>		<a href="#">CLICK HERE FOR CUMULATIVE MEMBERSHIP DATA</a>	TOTAL FAMILY UNIT MEMBERS 172
DECEASED 17	CLUB CANCELLED 0		FAMILY MEMBERS PAYING HALF DUES 88
OTHER 92	TOTAL 109		